

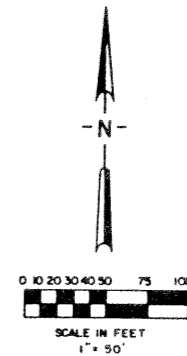
RIVER BRIDGE P.U.D. PLAT 3B

A REPLAT OF PARCEL 3B
RIVER BRIDGE P.U.D. PLAT 3A (PLAT BOOK 69, PAGES 157 THROUGH 158)
OF THE PUBLIC RECORDS OF PALM BEACH COUNTY, FLORIDA

A PORTION OF SECTION 15, TOWNSHIP 44 SOUTH, RANGE 42 EAST,
CITY OF GREENACRES, PALM BEACH COUNTY, FLORIDA.

JANUARY 1993

SHEET 2 OF 2



STATE OF FLORIDA
COUNTY OF PALM BEACH
This plat was filed for
record at _____, this
day of _____, 1993,
and duly recorded in
Plat Book No. _____ on
Pages _____ thru _____.
MILTON T. BAUER
Clerk Circuit Court
By: _____

LEGEND

- D.E. DRAINAGE EASEMENT
- U.E. UTILITY EASEMENT
- FND. FOUND
- P.O.C. POINT OF COMMENCEMENT
- P.O.B. POINT OF BEGINNING
- P.C.P. PERMANENT CONTROL POINT
- P.R.M. PERMANENT REFERENCE MONUMENT
- R/W. RIGHT-OF-WAY
- REF. REFERENCE
- SEC. SECTION
- TWP. TOWNSHIP
- RGE. RANGE
- P.L.S. PROFESSIONAL LAND SURVEYOR
- L.B. LICENSED BUSINESS
- TYP. TYPICAL

PALM BEACH FARMS COMPANY PLAT No. 3
(P.B. 2, PG. 47)

RIVER BRIDGE P.U.D. PLAT 4B
(P.B. 67, PGS. 26-27)

RIVER BRIDGE P.U.D. PLAT 4A
(P.B. 61, PGS. 27-29)

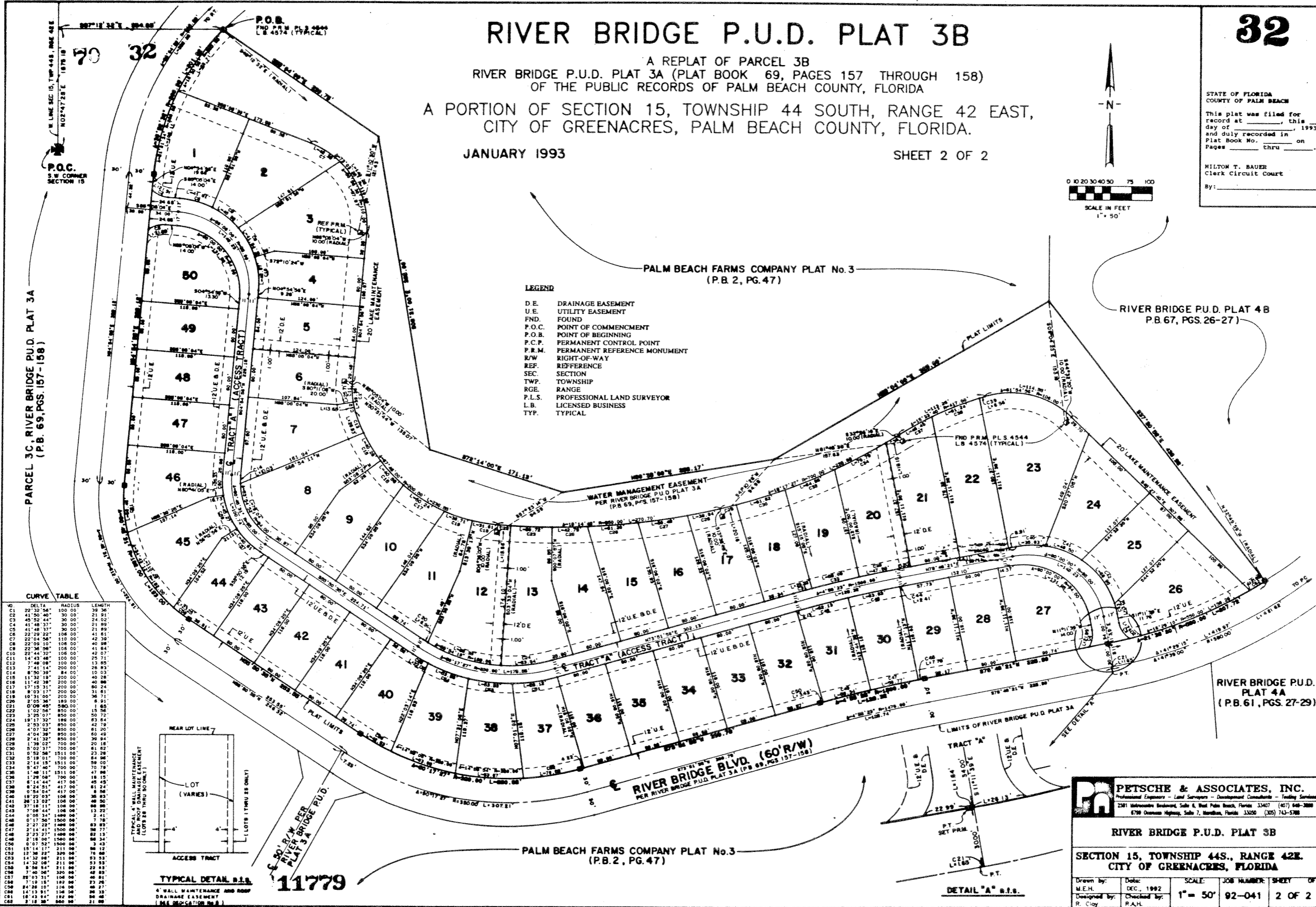
PALM BEACH FARMS COMPANY PLAT No. 3
(P.B. 2, PG. 47)

PETSCH & ASSOCIATES, INC.
Professional Engineers - Land Surveyors - Development Consultants - Trailing Services
2501 International Boulevard, Suite 4, West Palm Beach, Florida 33407 (407) 648-3888
6700 Oceanway Highway, Suite 7, Maitland, Florida 32750 (305) 743-5700

RIVER BRIDGE P.U.D. PLAT 3B

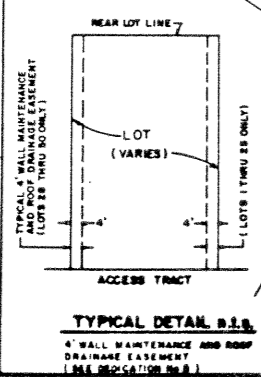
SECTION 15, TOWNSHIP 44S., RANGE 42E.
CITY OF GREENACRES, FLORIDA

Drawn by: M.E.H. Date: DEC. 1992
Designed by: R. City Checked by: R.A.H.
SCALE: 1" = 50'
JOB NUMBER: 92-041
SHEET OF: 2 OF 2



CURVE TABLE

NO.	DELTA	RADIUS	LENGTH
C01	22°32'56"	100.00	39.36
C02	45°05'44"	30.00	24.02
C03	41°44'31"	30.00	21.89
C04	44°31'31"	30.00	21.89
C05	22°29'22"	108.00	41.51
C06	22°04'54"	110.00	40.98
C07	22°09'10"	108.00	40.98
C08	22°24'32"	106.00	42.07
C09	14°43'48"	100.00	35.71
C10	7°48'08"	100.00	13.85
C11	7°41'14"	200.00	26.83
C12	11°32'18"	200.00	40.28
C13	8°50'38"	84.00	10.03
C14	18°15'31"	200.00	80.24
C15	8°03'11"	200.00	31.61
C16	18°13'09"	200.00	76.71
C17	2°05'36"	180.00	8.91
C18	0°08'48"	850.00	15.56
C19	1°02'58"	850.00	15.56
C20	3°25'01"	850.00	50.72
C21	19°17'32"	188.00	83.64
C22	2°03'01"	850.00	42.78
C23	4°01'33"	850.00	81.20
C24	4°04'39"	850.00	80.49
C25	2°41'32"	700.00	36.84
C26	1°38'02"	700.00	20.16
C27	5°02'31"	700.00	81.62
C28	0°52'56"	1511.00	23.26
C29	5°18'01"	700.00	86.96
C30	2°14'15"	1511.00	114.00
C31	9°47'40"	700.00	70.78
C32	7°46'11"	1511.00	47.88
C33	1°29'08"	700.00	18.15
C34	8°24'51"	417.00	61.24
C35	0°56'04"	417.00	6.36
C36	18°22'03"	108.00	61.77
C37	26°13'02"	108.00	48.50
C38	37°18'11"	108.00	68.82
C39	7°08'44"	108.00	13.22
C40	0°08'24"	1486.00	8.41
C41	0°17'50"	1500.00	7.78
C42	2°07'22"	1486.00	82.93
C43	2°14'41"	1500.00	82.77
C44	2°23'27"	1486.00	82.13
C45	2°18'06"	1500.00	86.34
C46	0°07'52"	1500.00	3.43
C47	18°14'17"	311.00	86.12
C48	12°36'32"	329.00	78.86
C49	14°32'08"	211.00	63.53
C50	14°32'08"	211.00	63.53
C51	9°58'54"	211.00	82.03
C52	7°40'56"	329.00	48.88
C53	2°03'31"	104.00	36.91
C54	7°19'18"	104.00	62.26
C55	8°26'10"	104.00	66.27
C56	14°13'91"	104.00	68.33
C57	18°43'84"	182.00	86.40
C58	8°18'38"	86.00	21.88



11779